

## AURA Wal 80-HS - schede tecniche

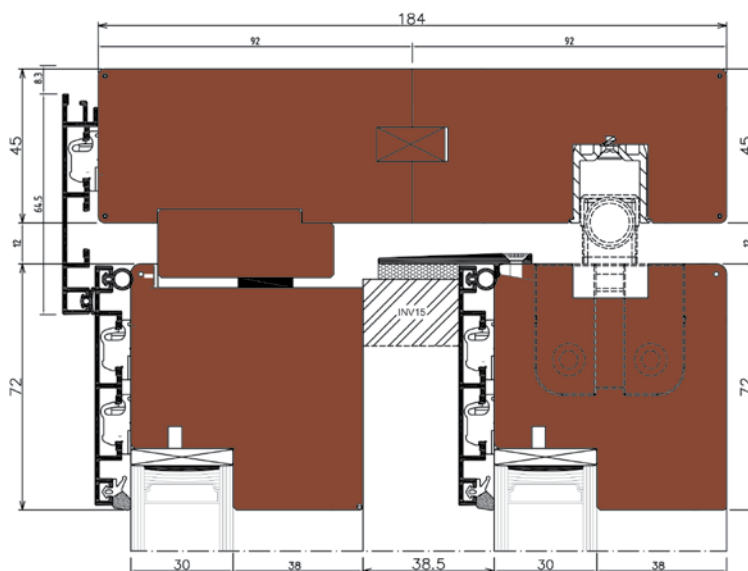
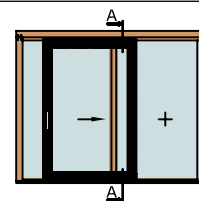


AURA wal 80-HS - specifiche tecniche

### AURA wal 80-HS - Alzante scorrevole

SCHEMA A - ANTA SINISTRA

SEZIONE VERTICALE - profilo superiore

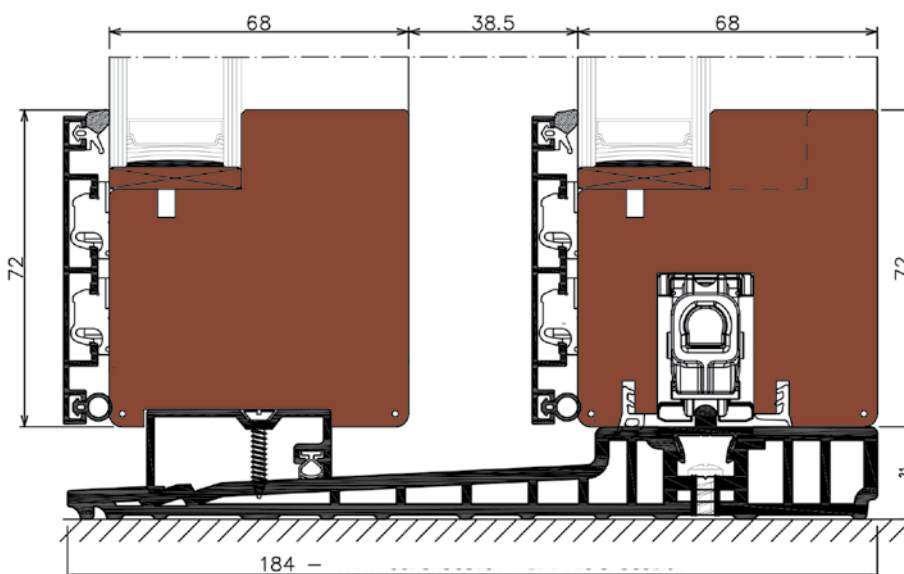


TAV 25

### AURA wal 80-HS - Alzante scorrevole

SCHEMA A - ANTA SINISTRA

SEZIONE VERTICALE - profilo inferiore

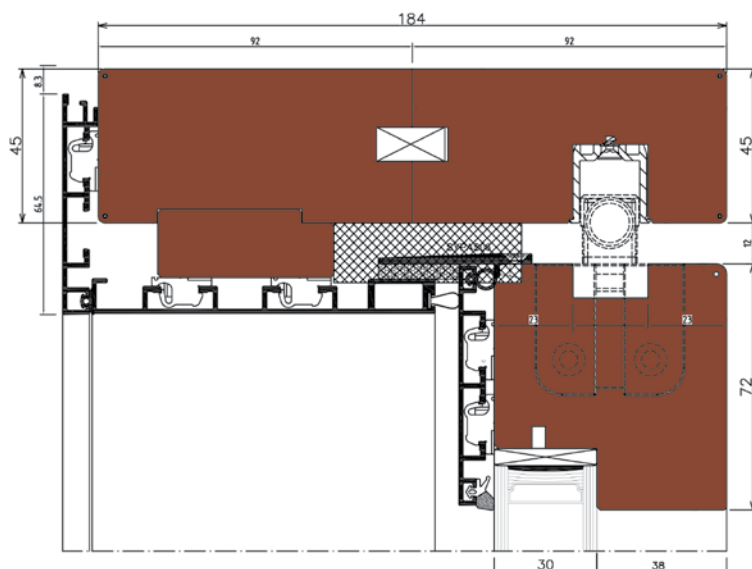
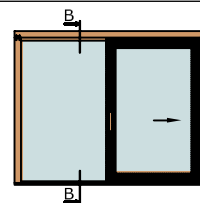


TAV 26

### AURA wal 80-HS - Alzante scorrevole

SCHEMA A - ANTA DESTRA

SEZIONE VERTICALE - profilo superiore

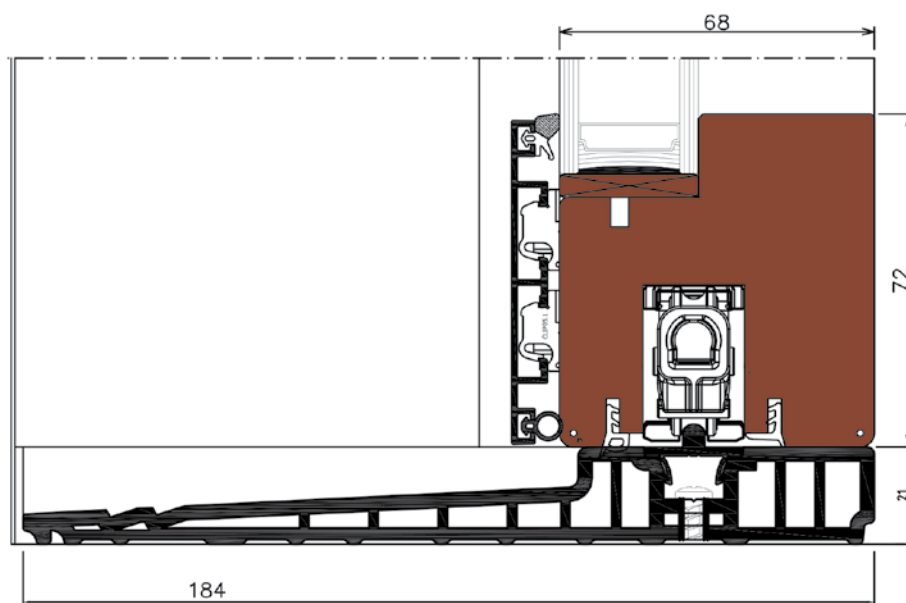


TAV 27

### AURA wal 80-HS - Alzante scorrevole

SCHEMA A - ANTA DESTRA

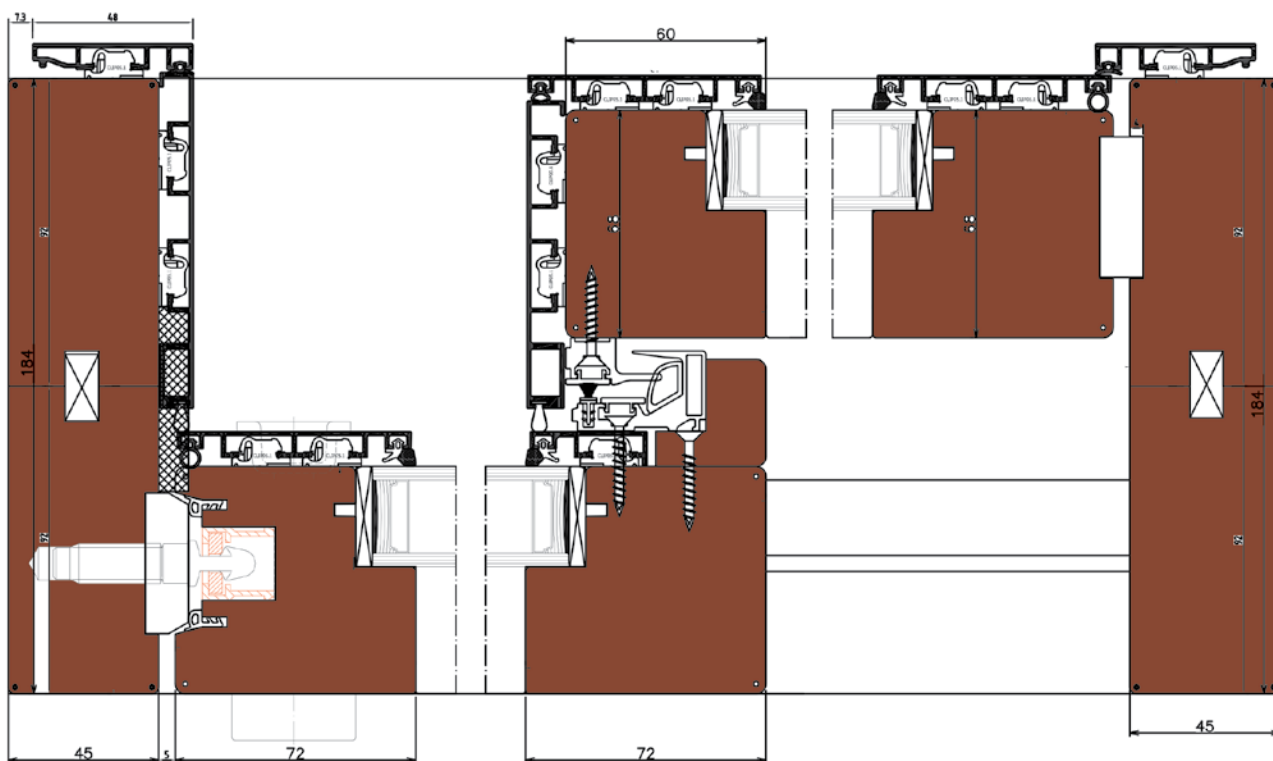
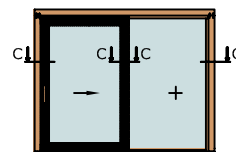
SEZIONE VERTICALE - profilo inferiore



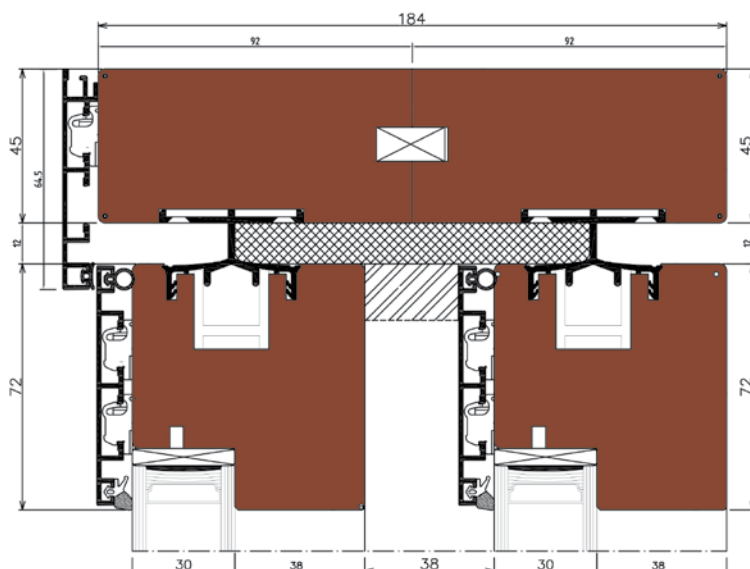
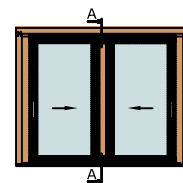
TAV 28

# AURA wal 80-HS - Alzante scorrevole

SCHEMA A - 1 ANTA FISSA E 1 APRIBILE  
SEZIONE ORIZZONTALE

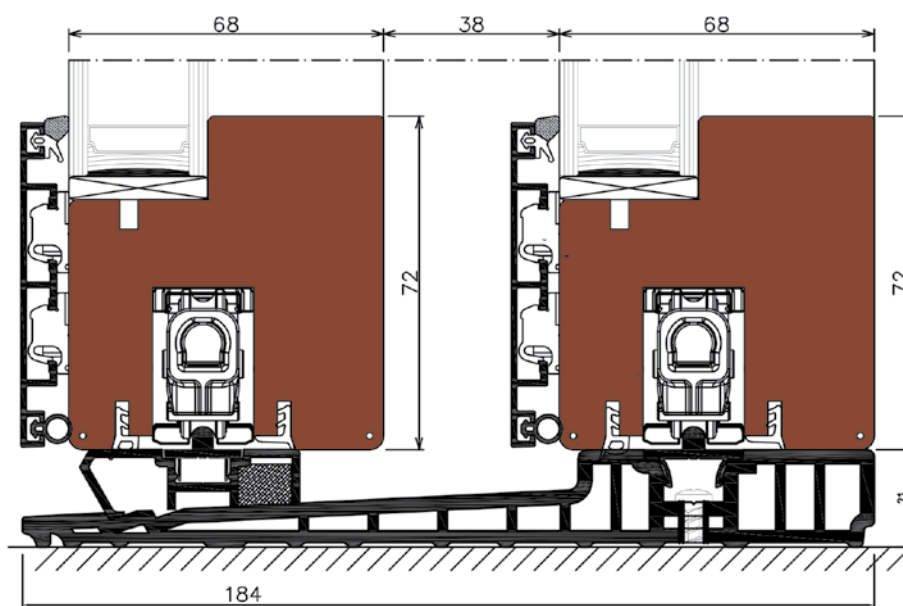


**AURA wal 80-HS - Alzante scorrevole**  
 SCHEMA B - 2 ANTE APRIBILI  
 SEZIONE VERTICALE - profilo superiore



TAV 30

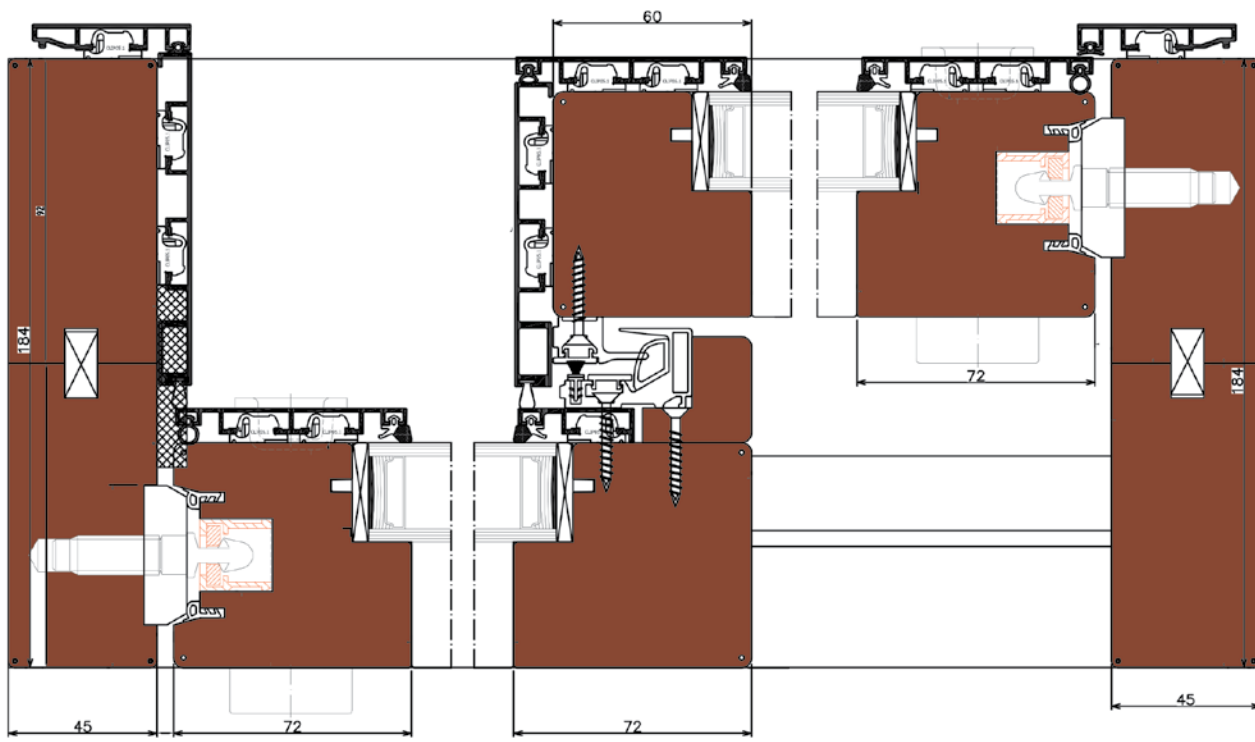
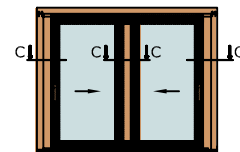
**AURA wal 80-HS - Alzante scorrevole**  
 SCHEMA B - 2 ANTE APRIBILI  
 SEZIONE VERTICALE - profilo inferiore



TAV 31

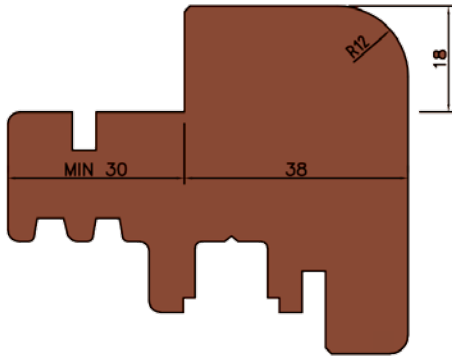
# AURA wal 80-HS - Alzante scorrevole

SCHEMA B - 2 ANTE APRIBILI  
SEZIONE ORIZZONTALE

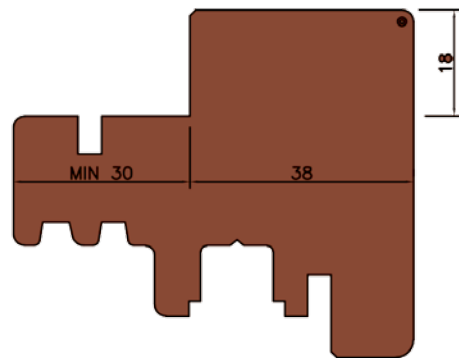


AURA wal 80-HS - specifiche tecniche

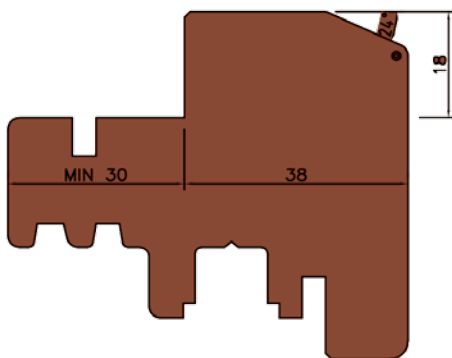
# LUMIA wal 80-HS - VARIANTI PROFILO ANTA- STANDARD



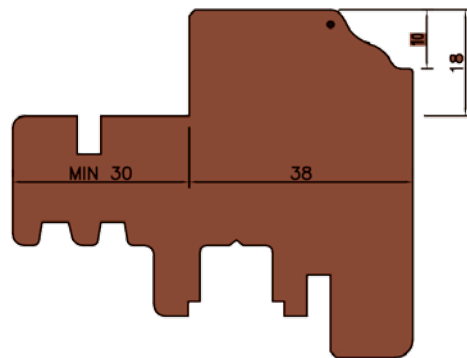
PROFILO SOFT  
STANDARD



PROFILO QUADRO  
STANDARD

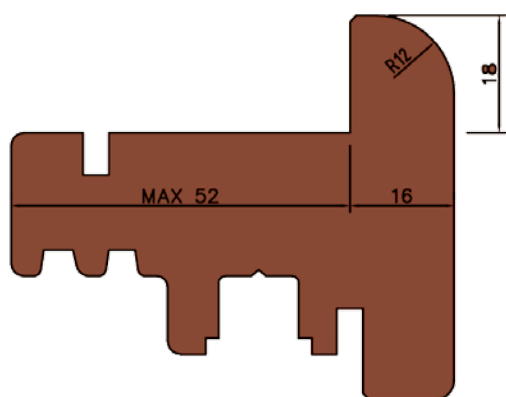


PROFILO CLASSIC  
STANDARD

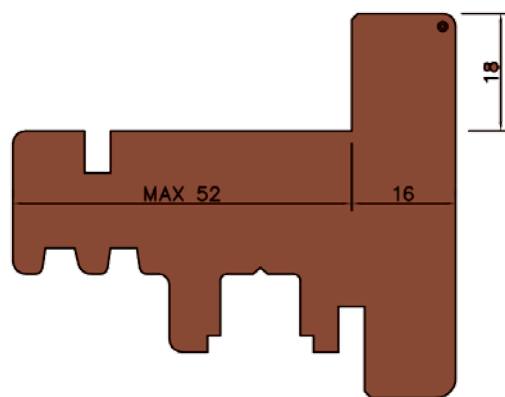


PROFILO LEVANTY  
STANDARD

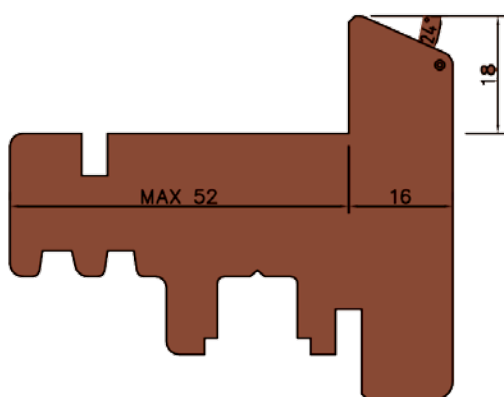
# LUMIA wal 80-HS - VARIANTI PROFILO ANTA - MAGGIORATA



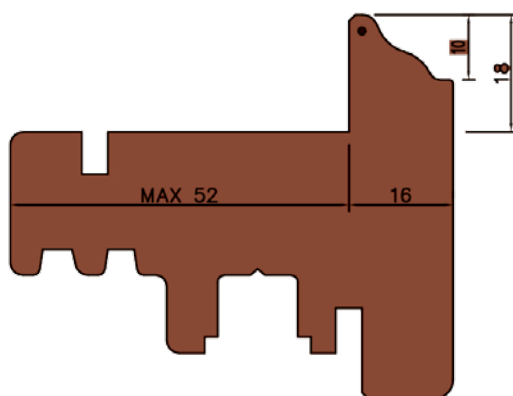
PROFILO SOFT  
STANDARD



PROFILO QUADRO  
STANDARD



PROFILO CLASSIC  
STANDARD



PROFILO LEVANTY  
STANDARD